

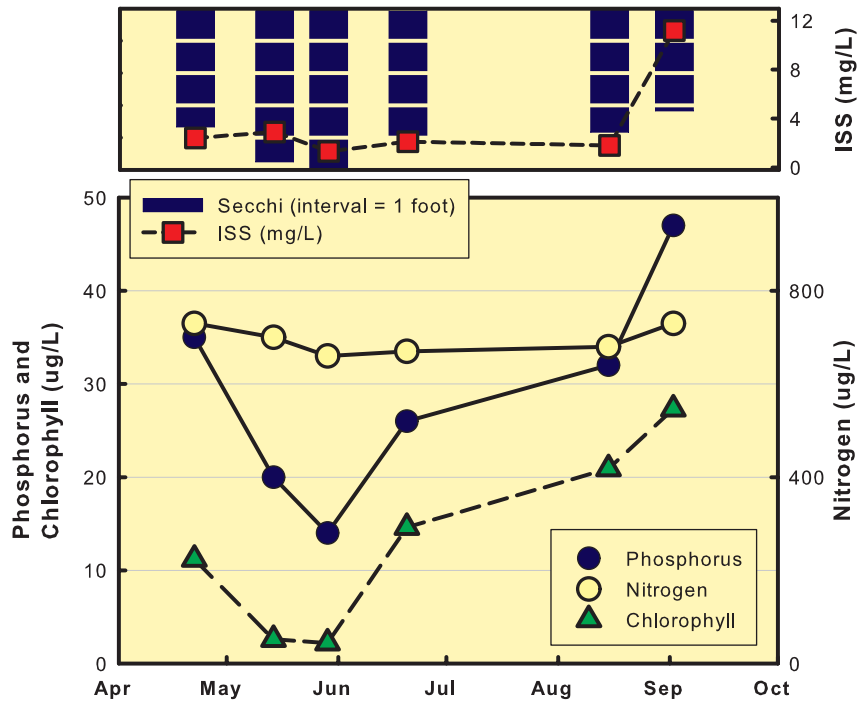
Hazel Creek Site 1

2014 DATA TABLE

| | 4/22 | 5/14 | 5/29 | 6/20 | 8/15 | 9/2 | Mean |
|--------|------|------|------|------|------|------|------|
| Temp | 52 | 64 | 75 | 80 | 78 | 80 | 71 |
| Secchi | 44 | 57 | 76 | 48 | 46 | 38 | 50 |
| TP | 35 | 20 | 14 | 26 | 32 | 47 | 27 |
| TN | 730 | 700 | 660 | 670 | 680 | 730 | 694 |
| CHL | 11.2 | 2.6 | 2.2 | 14.6 | 20.9 | 27.3 | 9.0 |
| ISS | 2.4 | 2.9 | 1.3 | 2.1 | 1.8 | 11.2 | 2.7 |

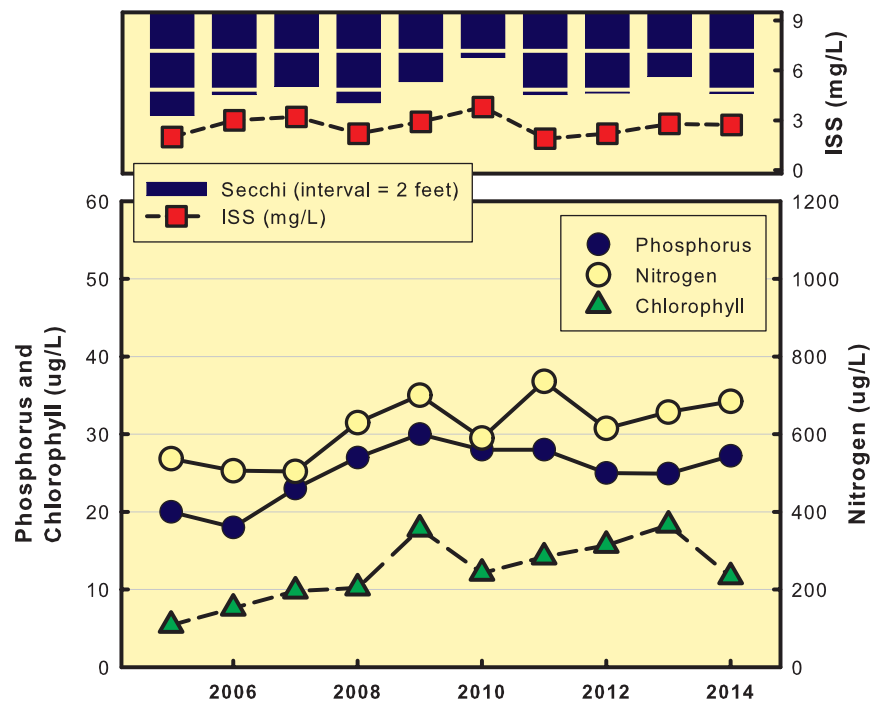
2014 GRAPH

Graph displays all 2014 data



TREND GRAPH

Graph displays geometric mean values for data collected between May 15 and September 15.



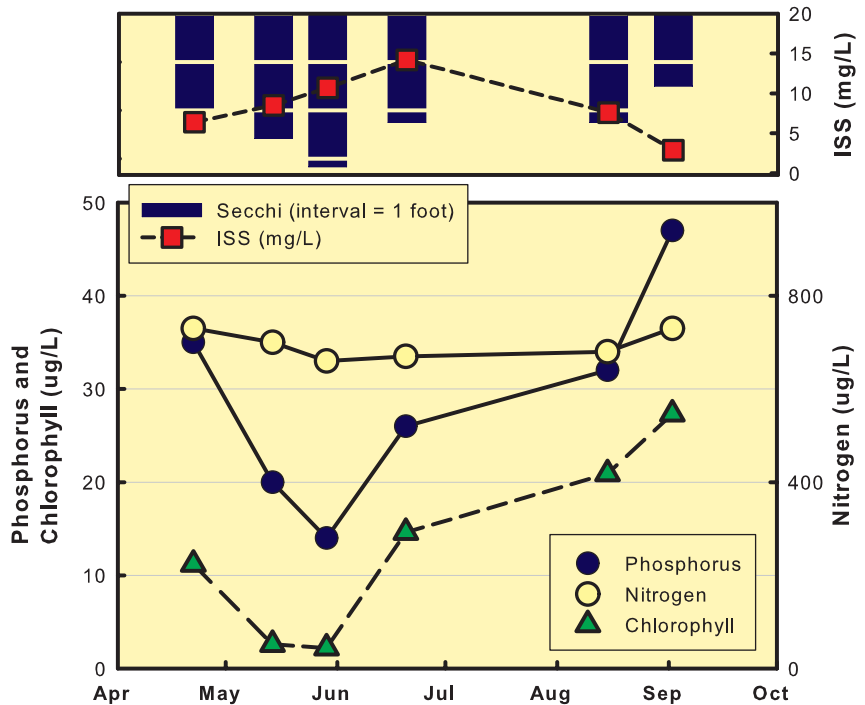
Hazel Creek Site 2

2014 DATA TABLE

| | 4/22 | 5/14 | 5/29 | 6/20 | 8/15 | 9/2 | Mean |
|--------|------|------|------|------|------|------|------|
| Temp | 58 | 63 | 75 | 80 | 76 | 80 | |
| Secchi | 24 | 31 | 38 | 27 | 27 | 18 | |
| TP | 18 | 14 | 14 | 18 | 25 | 15 | |
| TN | 1320 | 1490 | 1430 | 1360 | 1550 | 1410 | |
| CHL | 8.3 | 4.6 | 5.7 | 13.4 | 34.1 | 25.8 | |
| ISS | 6.4 | 8.5 | 10.7 | 14.2 | 7.6 | 2.9 | |

2014 GRAPH

Graph displays all 2014 data



TREND GRAPH

Graph displays geometric mean values for data collected between May 15 and September 15.

