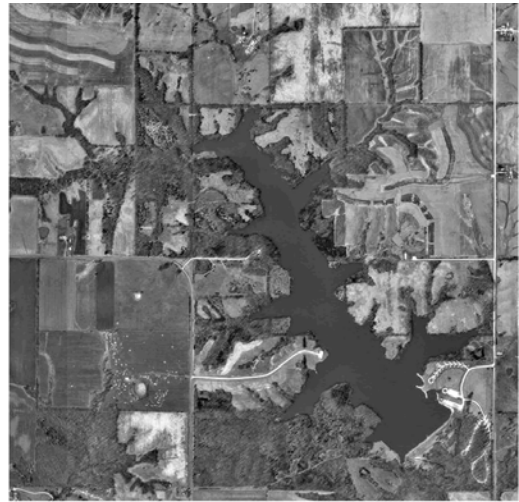
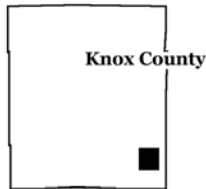


Henry Sever Lake

Henry Sever Lake is located in the Henry Sever Conservation Area of Knox County. This 140 acre lake has a watershed of 1,978 acres which is made up of 44% cropland, 28% grassland and 20% forest.



Location of Henry Sever Lake

Descriptive statistics for Henry Sever Lake – 2005

	Secchi (inches)	TP (ug/L)	TN (ug/L)	CHL (ug/L)	ISS (mg/L)
Geometric Mean	29	55	991	8.6	3.4
Minimum	14	36	360	3.2	1.7
Maximum	51	109	1880	13.0	6.2
Number of Samples	8	8	8	8	8

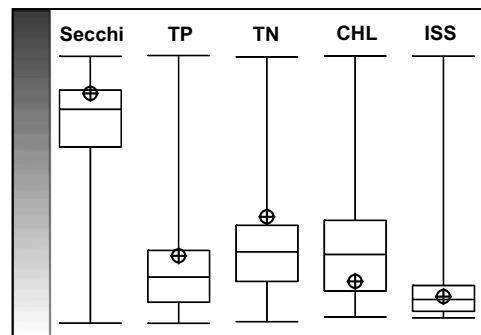
Relative to statewide values, phosphorus and nitrogen were high in Henry Sever Lake with 2005 geometric means near the 75th percentile.

Chlorophyll levels were low relative to nutrients due to ISS which bind nutrients and shade the algae.

ISS levels in Henry Sever Lake were actually higher than the data suggest; analysis done on filtrate from samples collected by the University of Missouri indicate that a fairly large amount of material passes through the filters and therefore isn't measured.

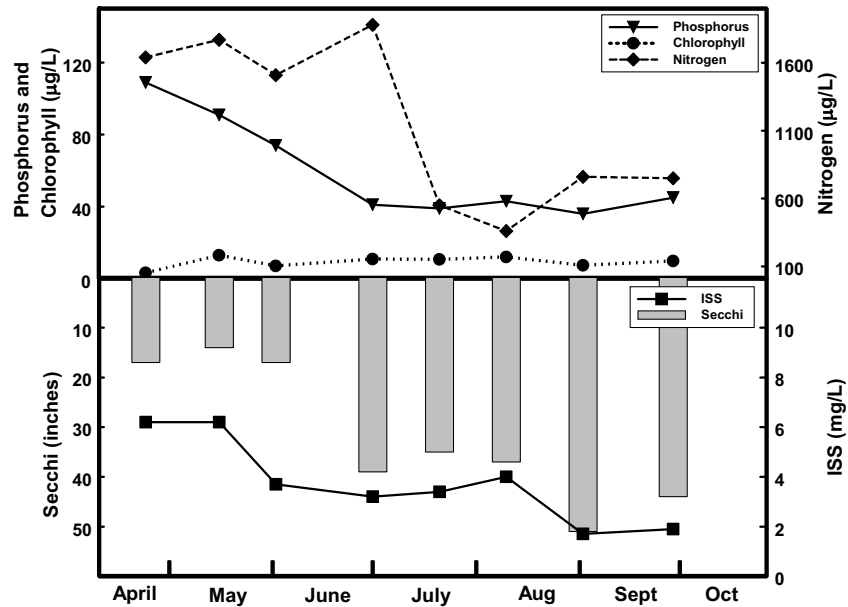
Parameters varied considerably during the sample season, especially nitrogen which exhibited a 5-fold difference between minimum and maximum values.

Relative Rank for Henry Sever Lake



Henry Sever Lake

Seasonal fluctuations of parameters for Henry Sever Lake – 2005



Nitrogen was high for the first half of the sampling season, and then decreased by more than half for the second half of the season.

Phosphorus also started out high, but showed a consistent decrease until leveling off during mid season.

Chlorophyll was very low on the first sample date, with relatively stable values the remainder of the season.

ISS values stair-stepped down during the season, with Secchi transparency increasing in response.