

Longview Lake

Longview Lake is managed by the Jackson County Parks and Recreation Department and is 798 acres in size. The majority of the lake's watershed is considered urban.

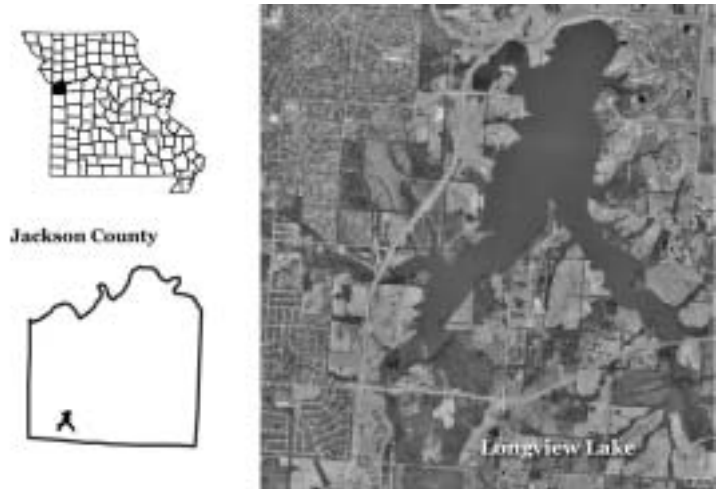


Figure 64. Location of Longview Lake.

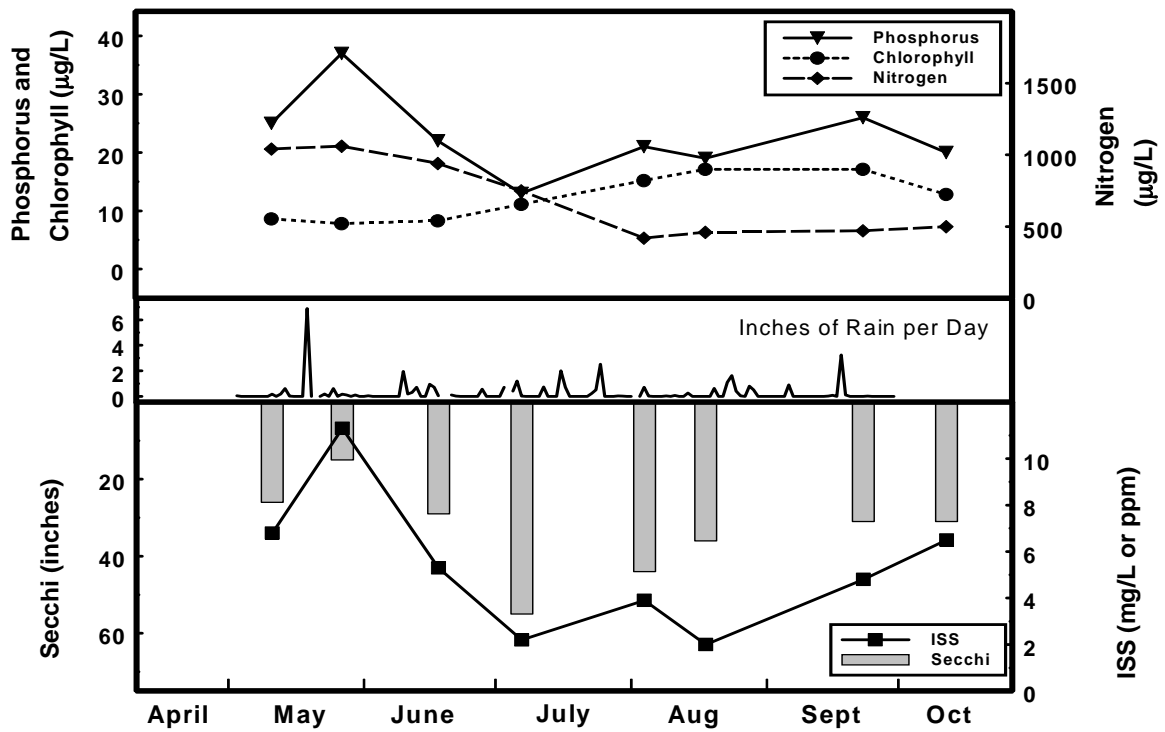


Figure 65. Seasonal fluctuations of parameters for Longview Lake – 2004

Table 21. Descriptive statistics for Longview Lake – 2004

	Secchi (inches)	TP (ug/L)	TN (ug/L)	CHL (ug/L)	ISS (mg/L)
Geometric Mean	31	22	658	11.7	4.6
Minimum	15	13	420	7.8	2.0
Maximum	55	37	1060	17.1	11.3
Number of Samples	8	8	8	8	8

2004 Results

Figure 65 shows how the parameters nitrogen, phosphorus, algal chlorophyll, inorganic suspended solids and Secchi transparency varied in Longview Lake during 2004. The descriptive statistics appear in Table 21.

A brief description of the results:

- A huge rain event on May 19 (~7 inches!) is likely responsible for the peaks in ISS and phosphorus concentrations and concurrent low Secchi transparency value on May 27.
- Algae were likely light limited during first part of sampling season (May-June), due to high ISS concentrations.
- Chlorophyll to phosphorus ratio increases after June, indicating that algae became more efficient during the second part of the sampling season (July-October).

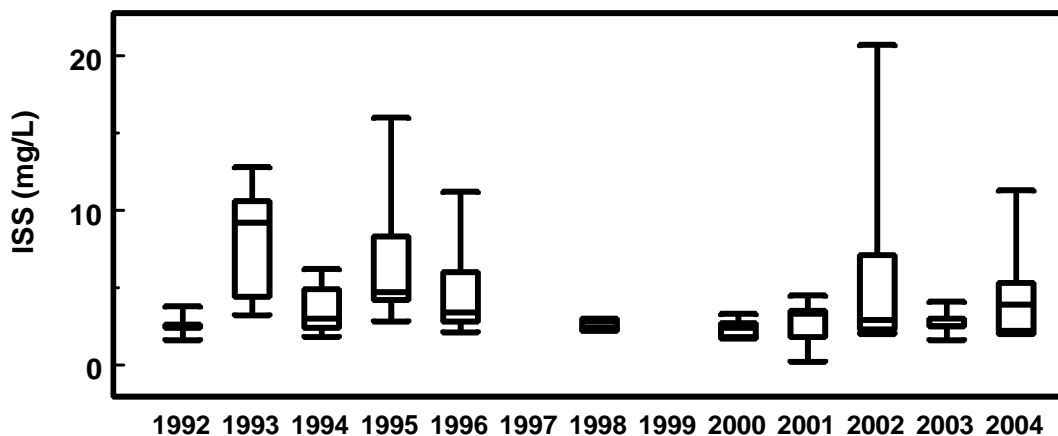


Figure 66. ISS trends in Longview Lake. No apparent trends in Longview Lake, though there are occasional high ISS concentrations observed.