

Longview Lake

Osage Plains Region

Longview Lake is managed by the Jackson County Parks and Recreation Department and is 798 acres in size. The majority of the lake's watershed is considered urban.

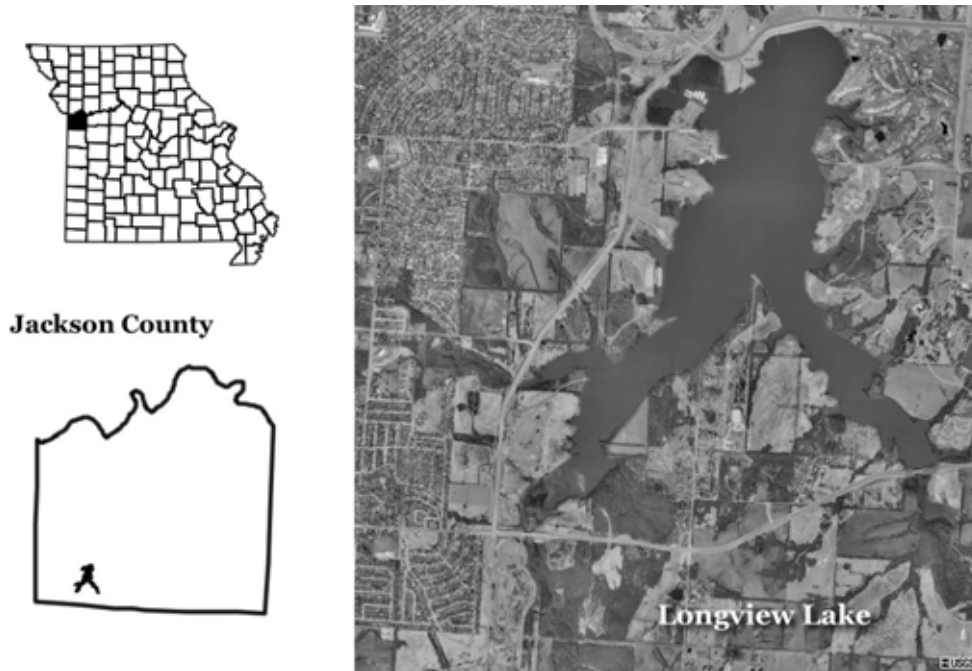


Figure 49. Location of Longview Lake.

2003 Results

Figure 50 shows how the parameters phosphorus, nitrogen, algal chlorophyll, inorganic suspended solids and Secchi transparency varied in Longview Lake during the 2003 sampling season. The descriptive statistics appear in Table 23. A brief description of these results:

- Longview Lake was sampled eight times from April 17 to October 2
- Maximum Secchi transparency value was 95 inches on June 19, more than double the geometric mean of 45
- The higher water clarity witnessed on June 19 was accompanied by a moderate drop in concentration of inorganic suspended sediments and a small reduction in chlorophyll concentration, together enough to dramatically impact Secchi transparency
- Longview Lake was mesotrophic in 2003, based on concentrations of chlorophyll, nitrogen and phosphorus

Table 23. Descriptive statistics for Longview Lake - 2003.

	Secchi (inches)	TP ($\mu\text{g/L}$)	TN ($\mu\text{g/L}$)	CHL ($\mu\text{g/L}$)	ISS (mg/L)
# of Samples	8	8	8	8	8
Median	48	16	385	7.0	2.8
Minimum	21	13	290	4.7	1.6
Maximum	95	23	600	10.6	8.4
Geometric Mean	45	17	415	6.9	3.2

Samples were collected between April 17 and October 2

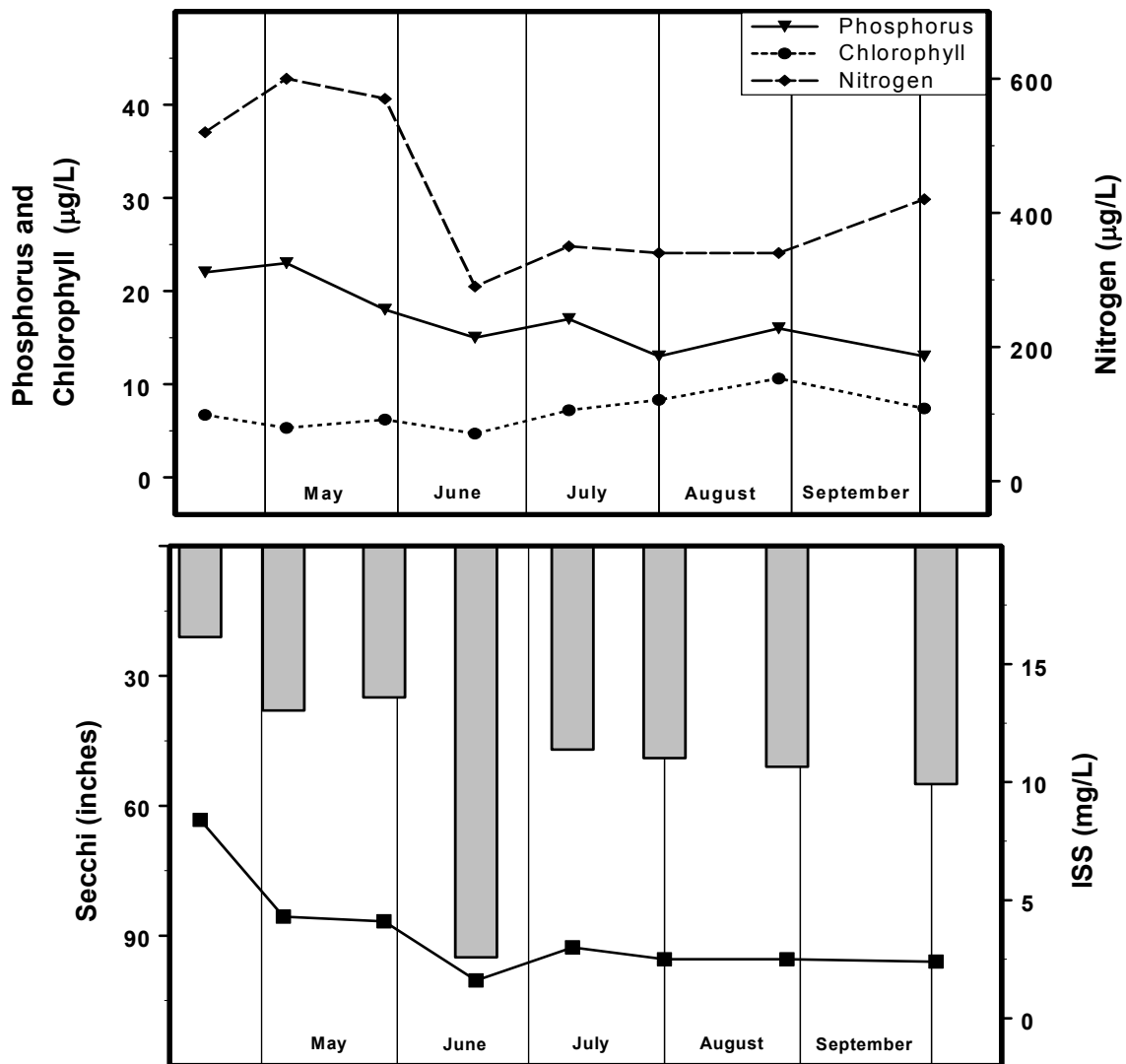


Figure 50. Seasonal fluctuations of parameters in Longview Lake – 2003. Bars represent Secchi, line represents ISS.