

## Longview Lake

Osage Plains Region

Longview Lake is managed by the Jackson County Parks and Recreation Department and is 798 acres in size. The majority of the lake's watershed is considered urban.

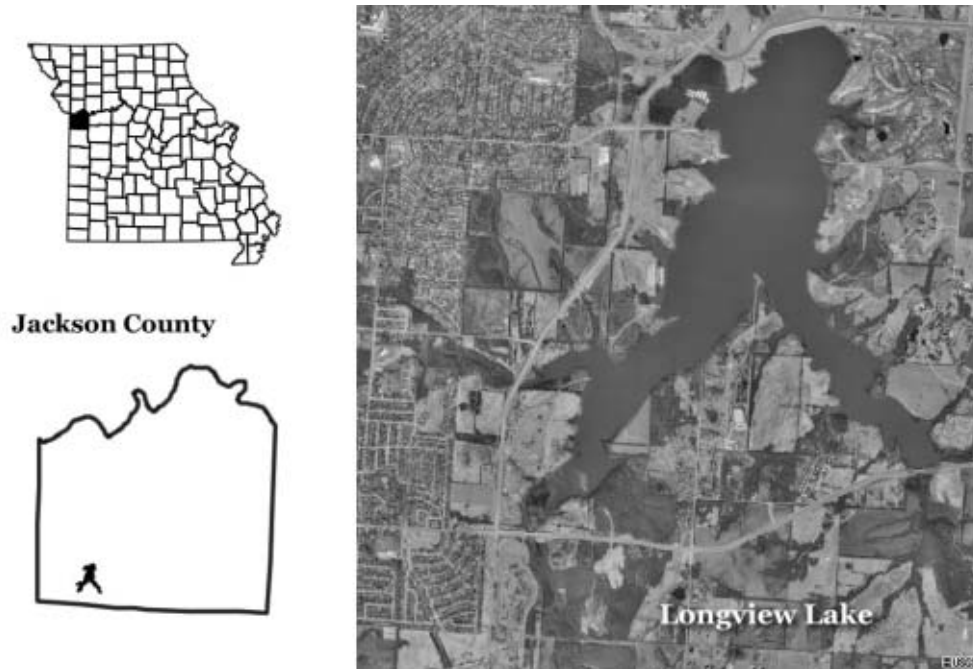


Figure 37. Location of Longview Lake.

### 2002 Results

Figure 38 shows how the parameters phosphorus, nitrogen, algal chlorophyll, inorganic suspended solids and Secchi transparency varied in Longview Lake during the 2002 sampling season. The descriptive statistics appear in Table 15. A brief description of these results:

- Longview Lake was sampled eight times from May 7 to October 21.
- All parameters (except Secchi) follow the same pattern – high value in mid-May decreasing as the season progresses.
- Secchi values are lower at beginning, but double to around 40 inches for the remainder of the sampling season.
- The geometric mean nitrogen concentration for 2002 is about 25% less than in 2001.
- Longview Lake was mesotrophic based on nitrogen and phosphorus geometric means and eutrophic based on chlorophyll geometric means.

Table 15. Descriptive statistics for Longview Lake - 2002.

Parameters	# of Geometric				
	Samples	Mean	Minimum	Maximum	Median
Secchi Transparency (inches)	8	29	9	47	40
Phosphorus ( $\mu\text{g/L}$ )	8	21	13	70	18
Nitrogen ( $\mu\text{g/L}$ )	8	448	210	1040	450
Chlorophyll ( $\mu\text{g/L}$ )	8	9.9	5.9	24.5	9.7
ISS (mg/L)	8	4.6	2.0	20.7	3.5

ISS=Inorganic Suspended Solids

Samples were collected between May 7 and October 21

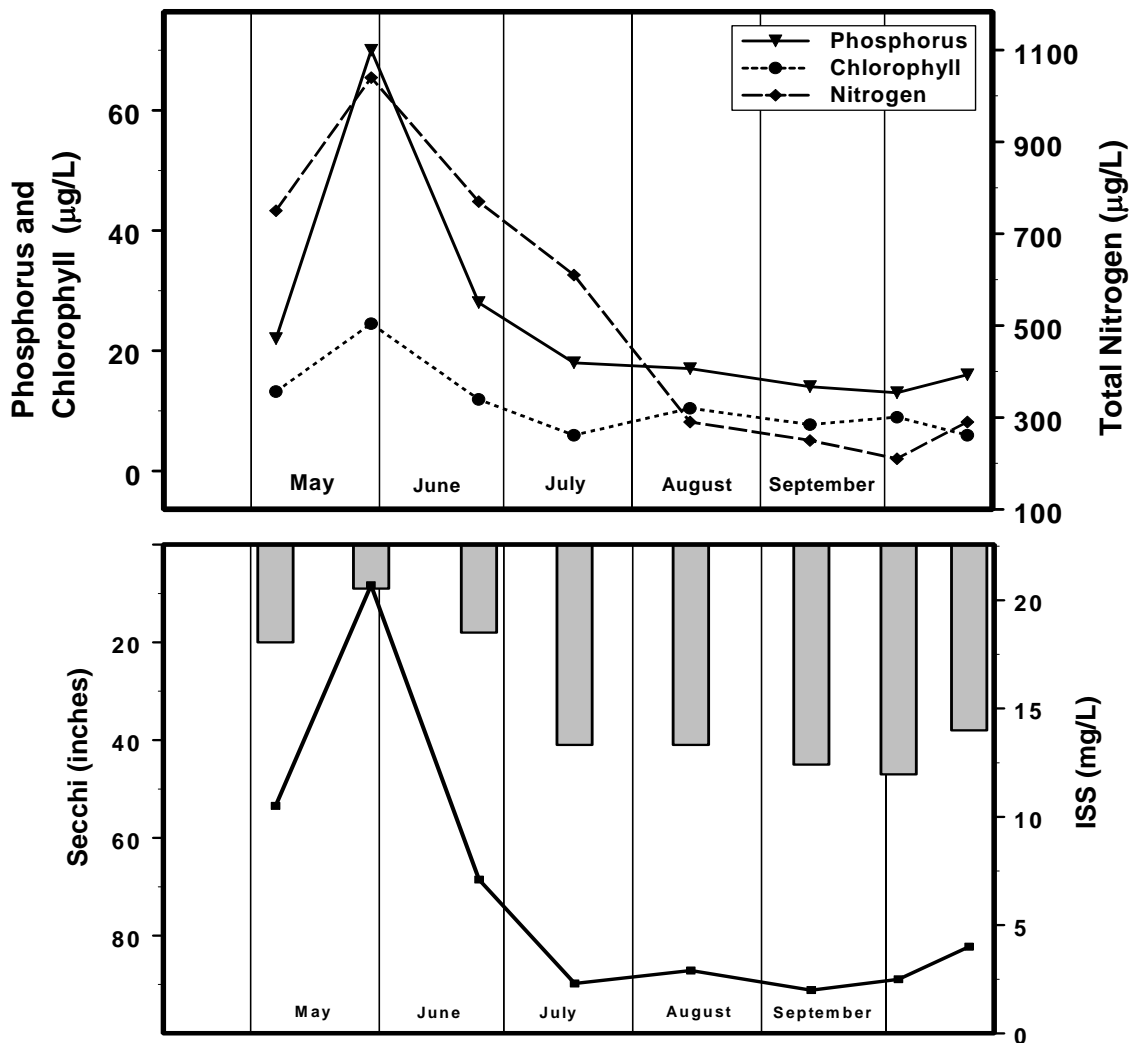


Figure 38. Seasonal fluctuations of parameters in Longview Lake – 2002. Bars represent Secchi, line represents ISS.