

## Longview Lake - 2001 Data

Osage Plains Region

Longview Lake is managed by the Jackson County Parks and Recreation Department and is 798 acres in size. The majority of the lake's watershed is considered urban.

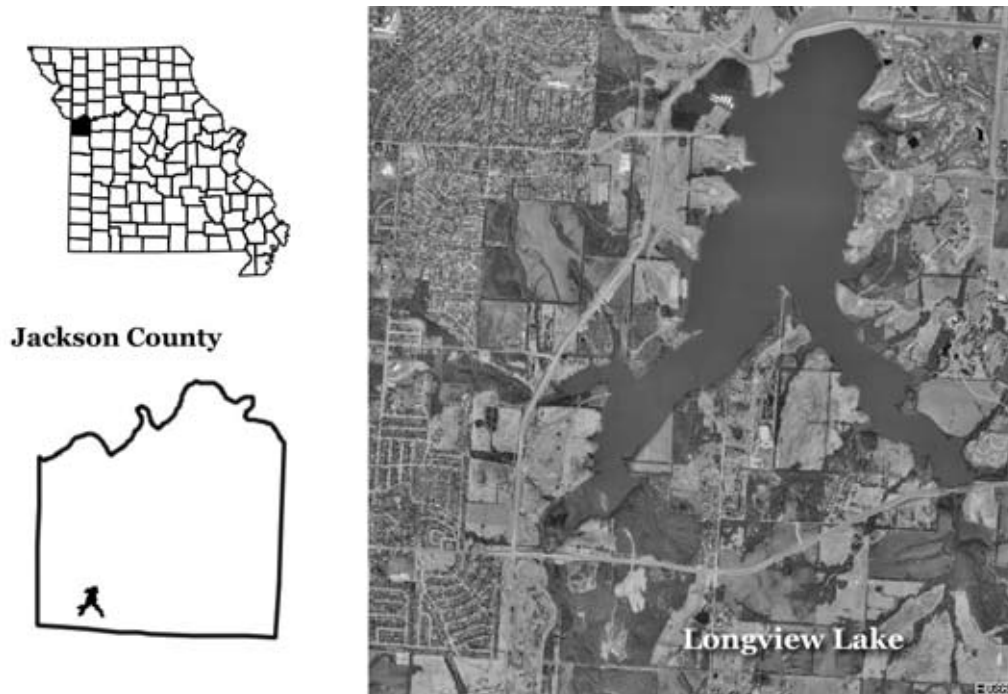


Figure 40. Location of Longview Lake.

### 2001 Results

Figure 41 shows how the parameters phosphorus, nitrogen, algal chlorophyll, inorganic suspended solids and Secchi transparency varied in Longview Lake during the 2001 sampling season. The descriptive statistics appear in Table 18. A brief description of these results:

- Eight samples were collected from April 7 to September 25.
- Nitrogen values decreased by more than half during the season and Secchi values doubled.
- Chlorophyll, phosphorus and ISS show no distinct trend over time.
- Longview Lake was mesotrophic for phosphorus and eutrophic for chlorophyll and nitrogen in 2001, based on geometric means.

Table 18. Descriptive statistics for Longview Lake - 2001.

Parameters	# of Geometric				
	Samples	Mean	Minimum	Maximum	Median
Secchi Transparency (inches)	8	32	20	46	33
Phosphorus ( $\mu\text{g/L}$ )	8	21	17	33	20
Nitrogen ( $\mu\text{g/L}$ )	8	585	340	1020	585
Chlorophyll ( $\mu\text{g/L}$ )	8	8.2	4.2	13.9	8.9
ISS (mg/L)	8	2.3	0.2	4.5	3.3

ISS=Inorganic Suspended Solids

Samples were collected between April 7 and September 25

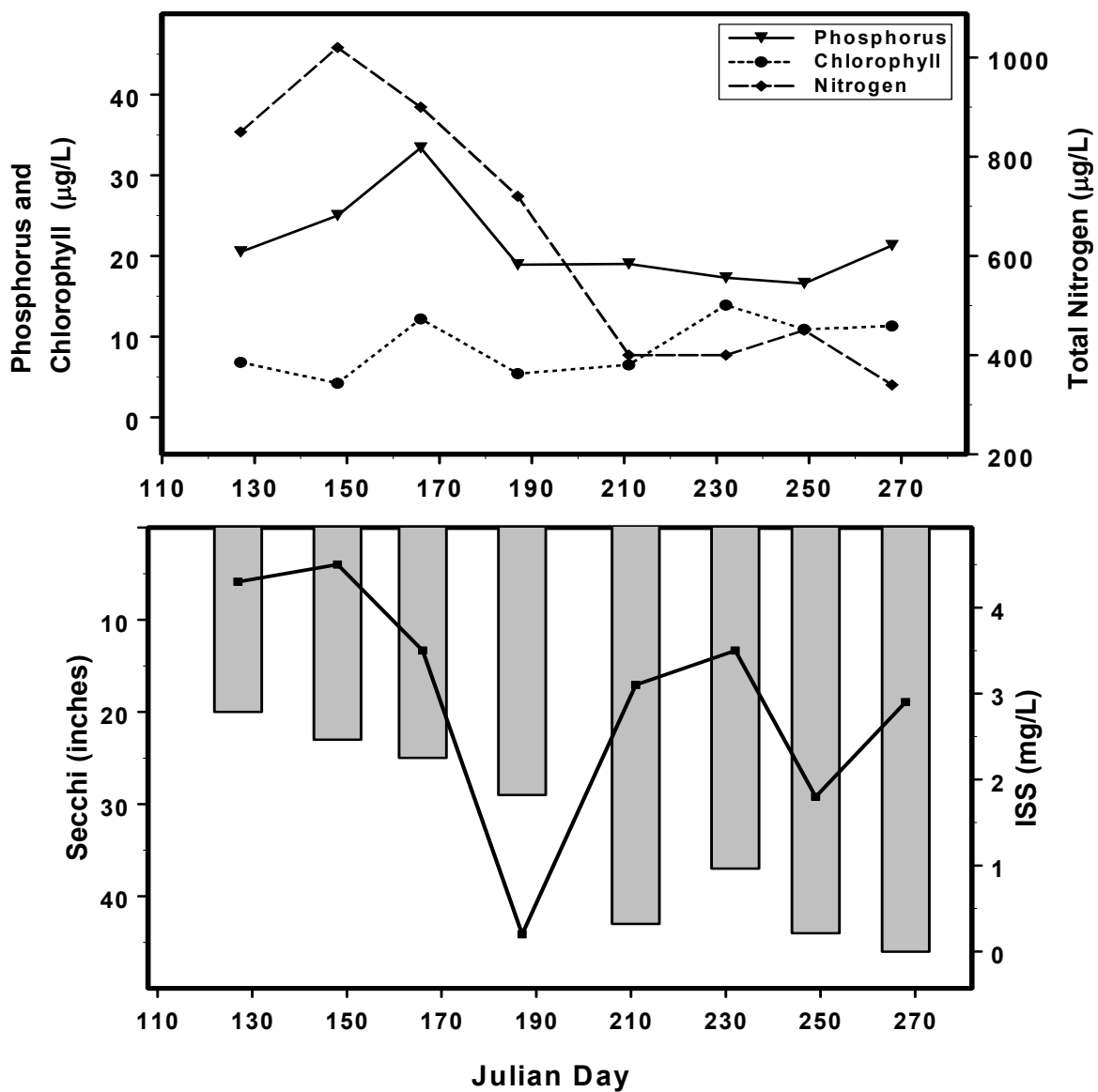


Figure 41. Seasonal fluctuations of parameters in Longview Lake – 2001. Bars represent Secchi, line represents ISS.